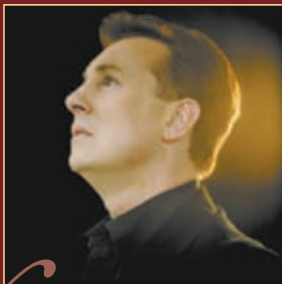


ANLABY QUADRANGLE SERIES PRESENTS



Maggie Beer & Jonathon Welch.

Enchant your Senses.

In the magnificent surroundings of historic Anlaby's Clydesdale Pavilion delight your tastebuds with dinner by the irrepressible Maggie Beer while your ears are enchanted by one of Australia's most celebrated voices, tenor Jonathon Welch of 'Choir of Hard Knocks' and 'Battle of the Choirs' fame.

Saturday 30th August 2008, 6.00pm for drinks and canapés

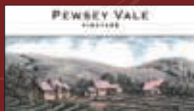
Dress: Black tie, drizabone and boots!

Cost: \$150 p/p or \$1,500 per table of 10.

HURRY! Bookings are essential as seats are very limited.

BOOKINGS 08 8566 2465

Sponsored by:



ANLABY
HOMESTEAD

25% of profits will be donated to The Big Country Choir.

Anlaby Road, Kapunda